



^{UW} **Extension** Waupaca County

Master Gardener Newsletter

February 2007

**Master Gardener Meetings are held
the 2nd Thursday of the month.**

6:00- 6:30 p.m. Social

6:30-7:30 p.m. Meeting - 7:30-8:30 p.m. Program

In the event that a meeting or event is cancelled due to weather, please listen to WJMQ 92.3 and WDUZ 92.7 for cancellation information. We will also attempt to notify members via email.



Unless otherwise stated, meetings and programs will be held in the lower level of the Waupaca County Courthouse.

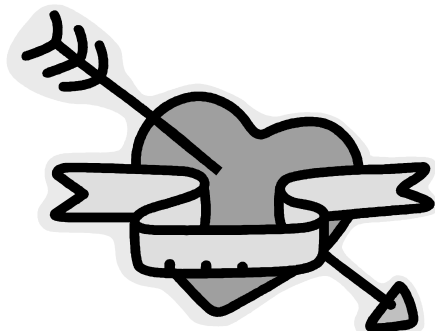


February 8 - At 6:30 p.m. Stephen Schulte of Foxfire Gardens in Marshfield will give a PowerPoint presentation on "Creating a True Sanctuary." Stephen has developed beautiful Oriental and hosta gardens on a property outside Marshfield. His presentation will be open to the public. See article in this newsletter for more information.

Meeting will follow the presentation. Members are asked to arrive at 6:00 p.m. and to bring a dozen cookies or bars for the refreshments. Coffee will be provided.



Happy Valentine's Day



February in the Garden

Garden Tools

Now is a good time to do a tool inventory and cleaning. If your hoes, shovels, and spades are dull, apply a light coat of oil to protect them and give them back a little spark. Sand handles and apply a little linseed oil. Adding a blotch of paint to your tools will personalize them when doing group projects.

Order Seeds

- Watch mail for seed catalogs and order seeds if not available locally.
- Look for disease resistant varieties. Consider purchasing varieties that have earned All-American honors.
- The 10¢ packets of annual and vegetable seeds purchased at Fleet Farm or discount stores aren't such a bad deal, and annual flowers can be useful for fillers!

Snow on Branches

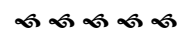
- After a winter storm, trees and shrubs may be covered in heavy ice and snow. The covering, while pretty, can break branches and even split trees. To clear your plants off without further harm, don't act too quickly when the branches are frozen as they are too brittle and easily damaged. Wait until the temperature rises a bit, and then gently shake the snow and ice from underneath the branches.
- Gently use a broom to brush off the snow, moving in upward strokes. Downward strokes pull too much on the branches.

Houseplants

- Houseplants can use more light now. Turn them weekly to develop shapely profiles.
- Water houseplants when soil is dry. Over watering causes root rot.
- Clean large leaf plants with a moist cloth to remove accumulated dust. Kill mealy bugs on houseplants with a cotton swab dipped in alcohol.

Icy Walks

- Keep a bag of cat litter on hand to sprinkle on icy walks. Unlike salt, it won't harm nearby plants or contaminate soil. Oil Dri works too.



**Note From Our President,
Pam Nitke**



I am so excited about working with a great group of Master Gardeners. I look forward to help the volunteers make this another successful year. The Executive Committee consists of dedicated volunteers to help the organization achieve its goals.

As we help another group of volunteers through the MG class, we need to focus on making them feel welcome and orientate them on just what this group is all about. I remember when I first started attending the courthouse meetings and how welcome I felt. I knew from the start the youth programs were for me. There are so many different ways to volunteer; I know there is something for everyone.

As we all wind down from the busy holiday season, gardening catalogs are arriving in the mail. I got so many wonderful ideas from Mike at our last meeting. I can't wait to add plants to my yard to attract butterflies and birds and make the perfect habitat. I know my husband will be sooo excited.

At the last Exec meeting we said GOOD-BYE to a great group of volunteers. They dedicated both their time and talents to this program and its members. A great big THANK YOU to the committee members and all master gardeners.

If there are some concerns you might have, suggestions on changes you want to see or just have a great idea to share, the current board is always available to help in any way, so don't hesitate to call.



MG Class Sign-Up

Submitted by Kathy Akey

We have lots of openings for Master Gardener mentors to attend

one of the spring classes for prospective Master Gardeners. The class is held Tuesday evenings from 6-9 p.m. in the ERVING (distance learning) room of the Clintonville High School IMC.

If anyone wishes to sign up as a mentor at one of the sessions, please contact me with your name and the date you wish to come. kakey@dotnet.com or phone at 715-823-2357.

Nancy Johnson and Bill Johnson have signed up for the January sessions.

Mentors are needed for these dates:
Feb. 6, Feb. 13, Feb. 20, Feb. 27, Mar. 6, Mar. 13.
March 20 - Susan Finkel
March 27 - Alice Brown

Also needed are volunteer mentors for April 3, 10, and 17.



*Happy Birthday to
the February
Birthday People!*



Verna Radtke, Feb. 5
Nancy Weasner, Feb. 10
Deb Calmes, Feb. 18
Linda Murie, Feb, 24
Patti Leiskau, Feb, 24

Happy Belated Birthday to Terry Kramer who celebrated his birthday January 13.



February 8 Program Open to the Public

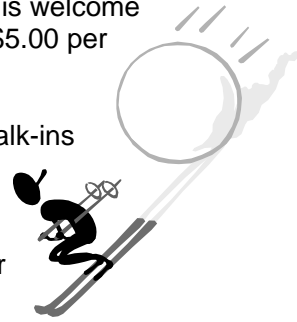
Submitted by Greg Blonde

The Waupaca County Master Gardeners monthly meeting on Thursday, February 8 will be open to the public for a feature presentation by Stephen Schulte of Foxfire Gardens. Schulte is well-known for his development of

beautiful Oriental and hosta gardens near Marshfield.

His topic will be "Creating a True Sanctuary". The presentation will take place at 6:30 p.m. in the lower level of the Waupaca County Courthouse at 811 Harding Street in Waupaca.

The general public is welcome to attend. Cost is \$5.00 per person. Advance registration is encouraged, but walk-ins are welcome as long as seating is available. For more information or to reserve your seat in advance, contact Waupaca County Master Gardener program coordinator Nancy Johnson (920-982-9413) or the Waupaca County UW-Extension office (715-258-6230).



Cast Your Ballot

We are fortunate to have our very own Pat Ritchie as a candidate for the position of WIMGA Board Member-At-Large.

Pat has been with the Master Gardner program since 1994 and has served as our local state rep for the past 10 years. She is involved in various community projects but her main talent lies within the 4-H program of which she has been involved with for 40 years!

Ballots must be submitted by March 5, 2007 and there are 2 options to cast your vote.

1. Detach or copy the paper ballot that was in the January 2007 WIMGA newsletter and mail to Susan Mahr, MG Program Coordinator, UW Dept. of Hort., 1575 Linden Drive, Madison, WI 53706, or

2. Email your response to Susan Mahr semahr@facstaff.wisc.edu.

Your Vote Counts!!!



January Meeting Notes

*Submitted by Rebecca Weber Schmoll,
Secretary*

*The attendance sheet
wasn't available at time
of printing.*



Welcome:

President Pam Nitke welcomed members to the meeting. There were no guests attending this meeting.

December Meeting: There was no business meeting at the December meeting because of the holiday party. Minutes from the executive committee meeting were shared.

State Representative Report:

Pat Ritchie reported that there are opportunities for continuing education hours. Winnebago County MGs have field trips scheduled on January 25 to J. & K. Orchids, February 10 to the Garden Expo in Madison, and February 24 a program on attracting bluebirds. Outagamie County MG is also sponsoring a bus to the Garden Expo in Madison. Contact Pat for more details on these continuing education opportunities.

There are no name badges yet for the new members. The badges have been delayed because of the change in the Master Garden name to Master Garden Volunteer. The new badges will reflect this name change.

Members were also reminded to vote for the WIMGA At-Large member. Pat is running for this position, and the ballot is printed in the state newsletter.

Book Share: No book share this month.

Committee Sign-Up: All sheets were available at the meeting for sign-up. Many of the committees need a chairman. After sign-up, these sheets will go to Faye Wilson, who is assembling the membership folders to be distributed to the members.

Treasurer's Report:

Audit: The books were audited, and errors were found. Colleen McCoy is to be commended for her accuracy.

Budget: Terry Kramer reported that ten people had not turned in hours. Nine people had turned in hours but not paid dues. Money, \$45, would be advanced to pay the dues of three members who had submitted hours. This was moved by Gloria Gruer and seconded by Faye Wilson.

The proposed budget was presented to the membership. This is a nine-month budget, running from January 2007 until August 31, 2007. The membership will vote on this budget at the February meeting. A certain amount of money needs to be set aside for the next budget that will run from September 2007 to August 2008. This issue will be addressed at the February Executive meeting.

Questions were raised about the proposed budget. The new category of "Invasive Plants Education/Control" has a budget of \$450. This will cover the expenses of the April and May monitoring program on invasive plants (garlic mustard). Mileage for people involved in the monitoring project and out-of-the-pocket expenses will be paid for with this budgeted amount of \$450. The "Membership" category has a budget of \$250. This is to cover the expenses of the membership binder. All the necessary paperwork for this membership folder will be printed and assembled.

Other: The next Executive Committee Board meeting will be Thursday, January 25 at the Sugar Bush Inn in Sugar Bush. Meet at 6:00 to dine; meeting at 6:30 p.m.

Gloria Gruer commented on several things. Sugar-free candy is not really sugar free if it contains sugar alcohol. This would be important to know if you are diabetic.

Nancy Johnson, program committee, spoke about the February program. Stephen Schulte of Foxfire Gardens in Marshfield will be giving a PowerPoint presentation on "Creating a True Sanctuary." Small cards advertising this event were available for members to hand out to advertise this program to the public. There was discussion about selling tickets before the event or just collecting the \$5 at the door. At this time, the money will be collected at the door. Each member is asked to bring one dozen cookies or bars for refreshments for everyone. Coffee will be provided. Members are also asked to come early (6 p.m.) to help set up the room for the program. We will have the business meeting after the presentation.

Twenty people are registered for the January Master Gardener general training program held in Clintonville. We need members to sign up to mentor classes.

A question was raised about sending the newsletter in an envelope. Pages of the newsletter cannot be stapled together but must be taped. Some newsletters ripped during mailing. It was decided to wait a month before deciding on how the newsletter will be mailed.

The Waupaca Community Garden is being planned for the Waupaca High School. The Ag Department and students who need community service hours for graduation will participate on this project. Garden beds will be started this spring. Students will grow and harvest the vegetables for the food pantries. Details of this project will be presented to all of the high schools in Waupaca County.

The meeting was adjourned by a motion from Connie Zolkoske and seconded by Nancy Weasner.

Gardeners Calendar

February 8, 2007

Creating a True Sanctuary

Waupaca County Courthouse

Presentation by Stephen Schulte of Foxfire Gardens will start at 6:30 p.m. Schulte is well-known for his development of beautiful Oriental and hosta gardens near Marshfield. Held in the lower level of the Waupaca County Courthouse at 811 Harding Street in Waupaca. General public is welcome. Cost is \$5.00 per person. Advance registration is encouraged, but walk-ins are welcome as long as seating is available. For more information or to reserve your seat in advance, contact Nancy Johnson (920-982-9413) or the Waupaca County UW-Extension office (715-258-6230).

Feb 9-11, 2007

WPT's Garden Expo, Madison

Sponsored by Wisconsin Public Television, Friends of WHA-TV, and the UW-Extension Horticulture Team, this event draws nearly 15,000 people to view 300 booths, provided by 160 exhibitors over 75,000 square-feet. The Madison Area Master Gardeners will staff their own booth. Numerous educational seminars, demonstrations, and workshops are offered on a variety of horticultural topics. Hours are Fri 4:00-9:00, Sat 8:00-6:00, and Sun 10:00-4:00. In the Exhibition Hall, Alliant Energy Center. An admission fee is charged to this fundraiser to support WI Public TV programming (including The WI Gardener). For more information visit WPT's Garden Expo website.

Feb 10, 2007

Garden Expo Bus Trip to Alliant Energy Center, Madison

Bus trip is sponsored by the Winnebago County MGA, cost is \$38. Buss will leave Appleton at 6:30 a.m. and Oshkosh at 7:00 .m. Return is approximately 7:00 p.m. Make checks payable to WCMGA and mail to Marge Bolding, Treasurer, 1138 Evans St., Oshkosh, WI 54901.

Feb 12, 2007

Winchester Academy Program Waupaca Public Library

Ronald Eckstein, a wildlife biologist with the state DNR will speak on

Wisconsin's bald eagles. Program starts at 7:15 and is free. Refreshments after presentation.

Feb 17, 2007

Women's Wellness Day New London High School

A day for women is planned from 8:45 a.m. to 3:00 p.m. which includes Maureen Jorgensen as the keynote speaker. Her topic will be The Secrets of Extreme Confidence. During the day there will be a number of breakout sessions on women's health, including Sue King and Candi Hilker providing gardening tips at the Rice's Greenhouse booth. Tickets are \$25 and can be bought at the New London Area Chamber of Commerce, 920-982-5822.

Feb 23, 2007 (12:00 noon)

Exploring the Growing of Garden Mums, Brown Bag Program

(contact your local UW County Extension Office for access)

The mums of today have undergone many changes. First their hardiness and blooming times have been greatly improved for gardeners. They come through the winter with greater success and their flowering can often be enjoyed as much as two weeks sooner than in the past. To achieve this dependable blooming and winter hardiness, mums must be grown in a way that assures full sunlight, ample water, well-drained soil and proper fertilization. Mums offer a great diversity in plant habit, flower color, and form.

March 10, 2007

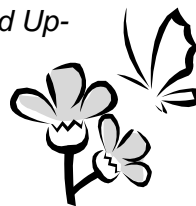
Gardening Expectations Conference

*From the Ground Up-
The Art, Science
and Selection
of Gardening*

Garden

Expectations is a one-day gardening conference scheduled for Saturday, March 10 at Appleton East High School. It is sponsored by the Outagamie Master Gardeners.

The cost for the full day, including a box lunch, is \$30. Please see the one-page registration form in this newsletter.



Appleton East High School is located at 2121 Emmers Dr. in Appleton. Directions from the West: Take Hwy 10 East; Hwy 10 will merge onto Hwy. 441 North. Continue on Hwy. 441 to KK/Calumet St. Exit (6.8 mi.). Turn left onto Calumet; take a right on East John Street.

Make your checks payable to OCMG and mail to Pam Hagen, 2139 W. Glendale Ave., Appleton, WI 54914.

For more information contact Kathy Baum at (920) 731-9385.



Gardening Books Donation

Thanks to Barb Lamb and Wal-Mart, the Waupaca County libraires have new gardening books available to readers.

Books can be requested through the local libraries or online through the Outagamie-Waupaca Library System at www.infosoup.org.

A list of the books include: *The Well Tended Perennial Garden: Planting and Pruning Techniques*; *Colors for the Garden: Creating Compelling Color Schemes*; *Front Yard Gardens: Growing More Than Grass*; *Seedheads in the Garden*; *The English Roses: Classic Favorites and New Selections*; *Designing the New Kitchen Garden*; *An American Potager Handbook*; *Heucheras and Heucherellas: Coral Bells and Foamy Bells*; *Shade: Planting Solutions for Shady Gardens*; and *Armitage's Native Plants for North American Gardens*.

It would be great if members would check out the books and give a report on them at our meetings or better yet, submit a book report to be printed in our newsletter.



InfoSource: <http://infosource.uwex.edu>

UW Publications Web Site:

<http://www1.uwex.edu/ces/pubs/>

MG Web Site:

<http://www.hort.wisc.edu/mastergardener>

UW Garden Facts:

www.wihort.uwex.edu/

AAS Vegetable Award Winner: Pepper F1 'Holy Molé'

'Holy Molé' is a memorable name and the plant will provide a memorable harvest of peppers. It is the first hybrid pasilla-type pepper (*Capsicum annuum*), which is used to make the famous molé sauce. 'Holy Molé' showed improved vigor, earliness and considerably higher yield than the comparisons in side-by-side trials. A reason for the higher yield is the virus resistances bred into the variety. 'Holy Molé' is resistant to two common viruses that stunt plants and reduce pepper production. The immature green peppers are 7 to 9 inches long and can be harvested in about 85 days from transplanting. If fruit is left on the plant, they will mature to a dark chocolate color. The pepper flavor is nutty and tangy. Mature plants are 3 feet tall; a perfect size for patio containers. 'Holy Molé' is easily grown in a sunny location and thrives on summer heat.



Unique qualities: First hybrid Pasilla, early, higher yield, hybrid vigor

Fruit size: 8 inches long, 1.5 inches wide; fruit weight 1.5 to 2 ounces

Fruit shape: Long and smooth like a Pasilla type

Color(s): Dark green immature, brown mature

Plant habit: Indeterminate growth, upright plant, spreading branches

Garden Spacing: 2 feet apart

Disease tolerances: Potato virus Y and Tobacco Mosaic Virus Strains 0, 1 and 2

Length of time from sowing seed to flower: 120 days

Closest comparison(s) on market: 'Pasilla Bajio,' 'Pasilla Chile'

University of Wisconsin, U.S. Department
of Agriculture and Wisconsin Counties
cooperating. UW-Extension provides
equal opportunities in employment and
programming including Title IX and ADA.

Waupaca County Master Gardeners
University of Wisconsin Extension
811 Harding Street
Waupaca, WI 54981
Phone: (715) 258-6230



Waupaca County

