



Glacial Gardeners Master Gardeners Association

August 2002

**NEXT GLACIAL GARDENER'S  
MASTER GARDENER ASSOCIATION  
MEETING:**

**September 10th, 2002**

**6:00 Hands on demonstration on propagation of  
streptacarpus**

**6:30 Meeting in the Lower Level of Florence Natural  
Resource Building- Members Group Photo**

**EVERYONE IS WELCOME!!**

**GLACIAL GARDENER'S CALENDAR  
OF EVENTS:**

Van Bourgondien's Bulb Fundraiser – Orders to be in by  
September 10<sup>th</sup> at the next meeting or before

**GLACIAL GARDENERS MEETING MINUTES  
AUGUST 13, 2002**

Meeting was held at the brewery and called to order  
at 6:20 pm. In attendance were:

Sandy Anderson,	Karen Groop,
Pat Olson,	Mary Jane Colombino,
Helga Lange,	Deb Simons,
Grace Ravnikar,	Betsy Hagberg and
Fleurette Saari.	

Grace gave Treasurer's report - \$616.38 in checking and  
\$1371.74 in savings.  
No UWEX or WIMGA reports as no representatives present.

**Under Old and New Business:**

The banner was done and was taken to be used at the Iron  
County Fair. The Contemporary Center Report was given by  
Karen Groop. 16 Boston ivies and 4 Goatsbeard were  
purchased at Meister's Nursery and planted at the Crystal  
Falls Contemporary Center by Karen Groop, Betsy Hagberg  
and Fleurette Saari.

Karen Groop also reported on the Marquette Garden Walk.

Grace suggested painting carpenter's aprons as gardening  
aprons, the price of them will be checked.

Both the Iron County and Florence County fairs were  
discussed. The Iron County Fair will have a display table  
August 15-18 and the Florence County Fair will be a manned  
booth August 23-25 with a raffle and plant sale.

The next meeting was planned for September 10 back at the  
Resource Center, film at 6 and meeting starting at 6:30.

Meeting adjourned at 7:35 pm.

\*\*\*\*\*

**GG DONATES PLANTS TO CC**

Written and submitted by Karen Groop

Flora Dawe, Director of the Crystal Falls Contemporary  
Center, expressed her sincere thanks on behalf of the Center  
to the Glacial Gardeners for the generous gift of 16 Boston Ivy  
and 4 Goatsbeard perennials intended for the Children's  
Nature Garden. The plants were not only purchased but  
planted as well, by GG members Fleurette Saari, Betsy  
Hagberg and Karen Groop. A recent heavy rain had washed  
away the top soil on the slope next to the building where the  
ivy was to be planted, leaving only exposed rocks and a large  
drainage pipe. With picks and shovels, these diligent ladies  
removed the rocks and replaced them with new top soil and  
plenty of Milorganite. To prevent future washouts, a double  
layer of landscape burlap was placed over and around the  
soil. Sixteen X's were cut in the burlap where the ivy was  
planted with rocks placed attractively between and around  
each plant, a much bigger job than anticipated. The  
Goatsbeard is a pleasing addition to the area designated for  
bird and butterfly houses handcrafted by the children.

It has been a joy to witness the nature garden evolve from  
a snow-covered, undesirable lot in February when planning  
first began, to a beautifully terraced, colorful extension in  
progress of the wildlife mural across the east side of the  
Contemporary Center building.

## ***FROM THE UWEX***

Here is the answer from Scott Reuss about the certification

I'll answer in multiple phases to cover all possibilities.

1. If they have not completed their original 36 volunteer hours, they have ( in my book) as long as they need to get those original hours in to one of us and get their original certification.
2. If they have completed their original 36 hours between Dec. 31 and today, then they do not need to turn in any additional hours for 2002.
3. If they completed their hours in 2001 and got their certification, then they actually do need to complete 10 hours of both volunteer and continuing education hours to remain as a Master Gardener in Good Standing for 2002.

Scott A. Reuss  
Marinette County UW -Extension

## ***MEMBERS CORNER***

### **GG's TOUR GREAT LAKES NURSERY**

Written and submitted by Grace Ravnikar

Members of the Glacial Gardeners club recently spent a very informative and delightful morning at the Great Lakes Nursery, located 10 miles north of Merrill, Wisconsin. It's owner, Tim Gutsch is a wealth of information and very willing to share his knowledge with others. He is a Forester by trade, and spent many years working in the paper industry nurseries. Since 1992, he has owned and operated his own nursery, specializing in native trees, shrubs, ferns, wildflowers, groundcovers and grasses. "Native" means naturally occurring here in northern Wisconsin and Michigan. The same shrubs, flowers, trees, and ferns you would find growing in our woods and fields. Best of all, they don't need to be "babied" through our winters to survive.

Most of these plants are shipped, bare-root, in April and May; and again in the fall. That is the best time to plant many of the trees and shrubs. They do, however, use gravel bed to keep bare-root plants for limited orders throughout the summer. These would need to be planted right away, as the roots need to be kept moist. They also carry a variety of potted wildflowers, ferns, groundcover and grasses.

Great Lakes Nursery gathers much of the seed that they grow their stock from. Tim shared with us, how the seeds need to be stored and stratified to insure germination. Once the seeds are planted, the watering and weeding begin. When I say "weeding", visualize 70 acres of nursery stock. Of course not every plot is planted at this time. But the plots that are fallow this year, are being prepared for planting next year or the year after.

Once the plants reach a certain size, some need to be root pruned to insure the roots spread out. And, of course, more weeding. Tim makes good use of farm equipment and hires a crew of workers to help with the workload. After much planning, patience, hard work, expertise, and sometimes years, the plants are ready for harvest. They are then sorted, graded, bundled, and shipped. When that new Redosier Dogwood or Canadian Hemlock arrives at our door, we can now appreciate all that went into each plant.

If you are looking for plants or shrubs that attract wildlife, or have a specific soil or water condition, Great Lakes Nursery is the place to contact. You can visit their web site at [www.greatlakesnursery.com](http://www.greatlakesnursery.com) for information and a complete price list, or call 1-888-733-3564.

**A Reminder** to those people with overdue library materials, you need to return them. If you are unable to get them in to the Resource center, Fleurette will pick them up and return them for you. Just give her a call or e-mail her and she would be glad to get them back to the Glacial Gardener's Library. Please get them back soon as others want to borrow them!

### **Iron County Fair Booth**

Written and submitted by Fleurette Saari

Five Glacial Gardeners designed and set up a display table at the Iron County Fair that took a Blue Ribbon. Mary Jane Colombino, Karen Groop, Betsy Hagberg, Pat Olson and Fleurette Saari combined their talents, personal property and ingenuity to set up the table early Thursday of fair weekend.

The theme of the display was growing deerproof perennials in the Iron County area. The new banner was used as a backdrop, along with two of the new GG t-shirts. Two wood log deer were placed on the table over a small picket fence with dried flowers at the base. The deer had bunches of flowers in their mouths and looked quite authentic in their nibbling. A red "NO" circle with a diagonal line across it was hung on the larger deer. A group of 11 perennials that we have successfully grown without deer damage were displayed in individual bud vases with their names prominently printed. A list of those flowers were also available as a handout, along with many other handouts on local insects, Michigan protected flower lists, info on container gardens, composting, growing peppers, and others. A notebook was left for fairgoers to ask questions, a number of people did this. The display was completed with a small wooden wheelbarrow, a garden spade, some gloves and seed packets.

A cash prize is included in the winnings, the amount is not yet known.

## NOTE FROM THE CHAIR



Hi

Well my tomatoes are finally starting to turn their appointed colors. I've always loved those golden cluster cherry tomatoes and this year I have several plants. The tomatoes on the plant I bought from Inga at the spring plant sale are just starting to turn red. She said they're kind of small but have an excellent flavor. I can hardly wait to eat one! Art and I have also enjoyed a meal or two of pesto made from the basil growing out back of the brewery. It was excellent and so easy to make. I did plant one fun non-edible this year and that is birdhouse gourds. From the looks of it there will be plenty of them to try a hands on class in making the birdhouses.

With the end of our casual summer meetings it was decided that we will reconvene at the Resource Center for the September meeting. We decided to skip the plant exchange this time and save our plants for the spring exchange and plant sale. If you still want to bring plants, that fine too. We'll find a way to get them to a good home. The plans are we will start at 6 p.m. with a hands on demonstration on propagation of streptocarpus given by yours truly. As some of you may know Inga is quite talented at growing these beautiful houseplants (African violets too) and I have been the lucky recipient of five of them. I also have the variety that is a little smaller with a violet flower. You will be given a choice of which plant you wish to propagate and take home with you.

Don't forget that your bulb orders are due at the September meeting. I did manage to get a few extra forms for anyone who wishes to have more than one. Pat Olson also went to Jami's for us and got their 10% discount club card for all our club members. Let me know who of you wants one and I will find a way to get it to you.

For those of you who are Master Gardeners in training, I did email Scott Ruess about your obligations with regards to recertifying. (See the note from Scott). Also, at the time I wrote this Kathy informed me she does have the certificates in her hands from Susan. One small delay that will be alleviated come August 20 is that Corrin who has to sign them went on vacation before the certificates arrived (and won't be back until the 20th). If all works well, by the time you read this you should have your certificates in hand. Congratulations to all new Master Gardeners. Give yourself a treat for all your hard work!

I look forward to seeing everyone come  
September 10,

Deb

I also have the following UW Horticulture web sites taken from Dianne Polaske's brochure. Thought they may be of interest to other Master Gardener members.

For "X-files" and Garden Facts: [www.uwex.edu/ces/wihort](http://www.uwex.edu/ces/wihort)

For information on insects:

[www.entm.purdue.edu/entomology/](http://www.entm.purdue.edu/entomology/)

For information on weeds:

[www.uwex.edu/ces/ipaw/links2.htm](http://www.uwex.edu/ces/ipaw/links2.htm)

Garden Center Pesticides for the Public (Fungicides and Insecticides):

[www.edu/ces/wihort/landscape/](http://www.edu/ces/wihort/landscape/)

Information on shoreline restoration:

[www.uwex.edu/ces/shoreland/](http://www.uwex.edu/ces/shoreland/)

## GARDENING QUESTIONS



Submitted by Fleurette Saari

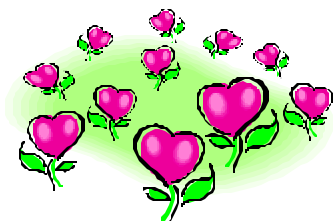
The GG Group members who set up the booth at the Iron County fair left a book for fairgoers to write questions in. Below are the questions. Fleurette thought she'd throw them out to the general group before researching them herself as some of you might know the answers right off the tops of your bright little heads! Let Fleurette know any answers you have.

1. Why won't my apple tree blossom? It has other trees near.
2. I would like to know why the Bishop Weed turns green and is no longer variegated?
3. I have a Fairy (I think this is what it says) rose bush. It gets a lot of small blossoms but they fall off and don't open. What is wrong?



**Congratulations to the GG Members who  
set up and worked on the booth for the  
Iron County Fair!  
They won a blue ribbon!  
Great Job Mary Jane, Karen, Betsy, Pat  
and Fleurette!**

Have you ever looked into the heart of a flower? – Princess Grace of Monaco



## RECIPE CORNER

### Bursting-with-Herbs Spread

From August 2002 Better Homes and Gardens

- 1 8 oz pkg. Cream cheese
- ¼ cup margarine or butter
- 1 to 2 cloves garlic, minced
- 1 Tbsp snipped fresh parsley or 1 tsp. dried parsley, crushed
- 2 tsp. snipped fresh chives or ½ tsp. dried chives
- 2 tsp. snipped fresh chervil or ½ tsp. dried chervil, crushed
- ¾ tsp. snipped fresh tarragon or ¼ tsp. dried tarragon, crushed
- ¼ tsp. lemon-pepper seasoning
- Fresh thyme (optional)
- Assorted crackers

1. Bring cream cheese and margarine or butter to room temperature. In a mixing bowl combine cheese and margarine with an electric mixer on medium speed until combined. Beat in garlic, parsley, chives, chervil, tarragon, and lemon-pepper seasoning. Cover and chill about 30 minutes.
2. Use hands to shape cheese into 1 1/2- to 2-inch balls. Wrap in plastic wrap or cheesecloth. Chill for 4 to 24 hours. Carefully remove wrapping. Let cheese stand for 15 minutes before serving. Top with fresh thyme, if desired. Serve with crackers. Makes about 1 ¼ cup.

It is suggested that you can also use this by adding a bit of hot, cooked pasta; to a bowl of tomato-based chowder or any favorite soup; or spoon a bit on hot, cooked potatoes, beans, or other vegetables.



## RECIPE CORNER



### NO Bake Cookies

Submitted by Betsy Hagberg

- 1/3-cup coco powder
- 2 cups sugar
- ¼ cup butter or oleo
- ½ cup milk
- Boil all of the above for 3 minutes
- Add; 2 ½ cups oatmeal
- 1 teaspoon vanilla
- ½ cup peanut butter
- Stir till peanut butter melts (doesn't take long)
- Drop onto wax paper
- Leave till cool and firm.
- Umm Good!

## WEB SITE UPDATE

If anyone has any past years pictures of projects they did, gardens they grew or anything else of interest they would like to include on the web site, please get it to Sandy or bring it to the next meeting. We are planning to update our web page and expand it a bit. Or if you have any ideas please bring those too!

### GG Grapevine is on the web!

<http://www.hort.wisc.edu/mastergardener/>

Click on the "local organization" button  
Then click on the purple map of Florence County or the  
'Glacial Gardener' button

Then click on the newspaper!  
(If you don't have Acrobat Reader you will have to  
download it)

## SOMETHING TO PONDER

Submitted by Deb Simons

After having read the book Anguished English By Richard Letterer, I started pondering the idea of how difficult the English language is to learn for kids, adults and to say the very least a foreigner. The book is a collection of writings of people of all ages who misuse our English language through misspelling or misunderstandings of words that give what they're writing about a whole new meaning. (If you want a good book for a good laugh this is the one to get, it can be ordered through Bookworld in the Iron Mt. Mall).

While there are some graphics in Mr. Letterer's book, the words are what paint the real picture and the results by and large, are quite humorous.

Now with that in mind think about applying the gift of speech to all the words that sound the same but are spelled different and have totally different meanings. I started to think how interesting it would be to sit in a crowded cafe and be able to overhear conversations. Our language when spoken, definitely gives a whole new meaning to...

Words That Mean Things  
by Jean Gene

"It's in my genes" she said.

"In your *what* !?" her friend blurted out.

"I think I have something in my ... my (she looked around the room hoping no one would hear)... genes," she said leaning across the table and whispering softly.

"Did you hear that? The girl across the room said "There's something in her jeans?!" a woman said. "It's in her jeans ! ?! ... That's what she said! It's in her jeans! ...What's in her jeans?! I hope it's not in *my* jeans!"

She said it again, shaking her head in disbelief but at the same time with acknowledgement, "It's...it's in my genes. I... I've thought about it long and hard and it's definitely... it's quite obvious it's...it's there... In my genes!" A long pause took place. Everyone within ear's reach was on the edge of their seats, straining to hear more.

"I read about it somewhere " she said, quite a matter -of-factly. "That it's physiologically impossible. But I think ...I...I truly think they're wrong. I definitely have it in my genes. They said it couldn't happen, but... it... it has with me, and... and it could happen with anyone in this room." She said as she whispered, leaning in closer. "It's almost like a bug... or something. I know it's there...alllll the time."

"Every time I...I think about it ... it's there! It's always there " she whispered, "It's gotten to a point where I've thought about it day and night; I've had a suspicion that it's been there...in my genes since childhood!!! I've had thoughts of anguish because of it.

Rarely, it can be days or sometimes months and I don't even concede that it's been there. Then a new day comes along, a new year with no warning, and then there it is... there that damn gene!... Springtime, that's when it's the worst! It's there... there... there in...in my genes".

"My love of life itself," she says, "Is through life... itself". What's wrong with me?! It... it must be my genes?!"



## Calendar

Sept 14, 2002

Festival of Fall

The Paine Art Center  
and Gardens,  
Oshkosh, WI



Celebrating the joy of the garden in autumn. Featuring rare bulbs, vendors and activities that focus on the beauty of fall in Wisconsin's landscapes. For more information or to request a pre-order form for special bundled collections of unusual plants, contact The Paine, 1410 Algoma Blvd., Oshkosh, WI 54901 at (920) 235-6903 Ext 21.

Sept 17-29, 2002

Garden Travel Study Program: Gardens and Hilltowns  
of Umbria and the Marches

American Horticultural Society Cruise Tour, Italy

For more information contact Mary Ann Patterson, The American Horticultural Society, Alexandria, Virginia U.S.A. at (800) 777-7931 ext. 121. Brochures containing complete itineraries are available from the Leonard Haertter Travel Company, 7922 Bonhomme Avenue, Clayton, MO 63105, phone (800) 942-6666 or fax (314) 721-8497.



**Deadline for next newsletter is:**

**September 20th, 2002**

Info can be emailed to me at [sande@up.net](mailto:sande@up.net) or check the directory for my address

## *Calendar (Cont)*

**Sept 21-22, 2002**

**Renaissance Herb Faire**

**Green Bay Botanical Garden, Green Bay, WI**

For more information contact The GBBG, 2600 Larsen Rd., P.O. Box 12644, Green Bay, WI 54307-2644 at (920) 490-9457.

***Plan ahead for 2003***

**March 21-22, 2003**

**Annual WI MGA Conference**

**River Falls, WI**

Speakers and workshops on a variety of topics, as well as many opportunities to meet fellow MGs from around the state. More information and registration forms will be included in the January 2003 issue of the WIMGA newsletter.

*Glacial Gardener's Master Gardener Association  
University of Wisconsin Cooperative Extension Office  
HC 1 Box 82A  
Florence, WI 54121*

